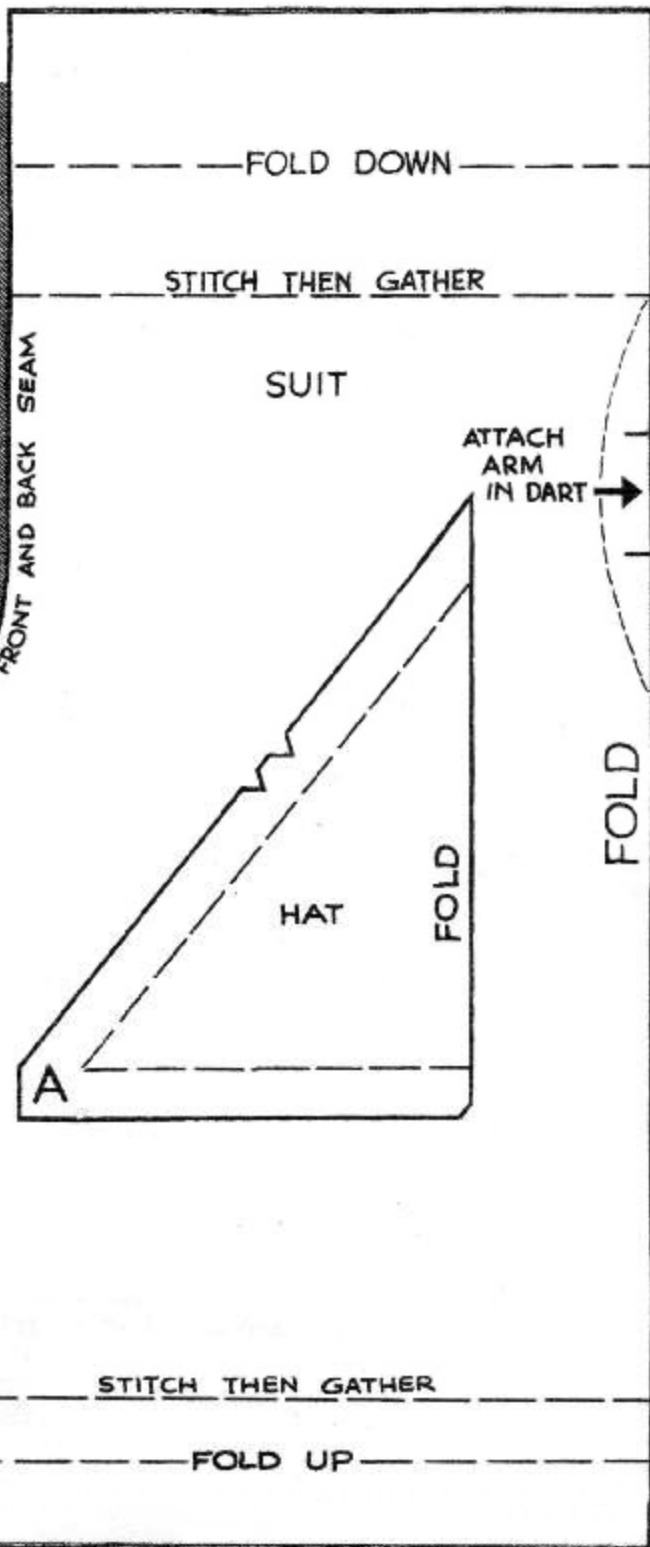
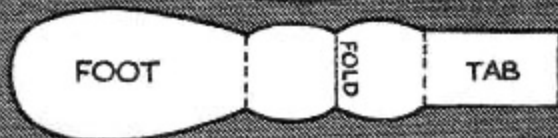


a quality copy from
GRANDMA'S HOUSE!
<http://www.grandmashouse.ws>

Clown Bean Bag

MADE OF SCRAPS



THIS CLOWN BEAN BAG is easy to make of scraps and is a big seller at bazaars.

MATERIAL REQUIREMENTS—Printed scrap 8x9 inches, plain scrap to match one of the colors in the print, 8 x 14 inches; tan felt 4 x 4 1/2 inches; sewing thread; scrap of wool for pompon; 1/4 pound dried beans; red embroidery thread; black ink, small wad of cotton to stuff head and hat.

CUTTING DIRECTIONS: **Printed Material**—Cut one suit piece, placing on fold. **Plain Material:** Cut one suit piece, placing on fold; cut one hat piece placing on fold. Cut two arm pieces 1 x 2 1/2 inches. **Felt:** Cut two hands and two feet, and one face piece. Trace features on face.

MAKING CLOWN: Seam the printed and plain suit pieces together at center front and center back. Match seams at crotch; stitch leg seams. Fold arm pieces in half and edges of pieces under so that they measure 1/2 x 1 1/4 inches. Insert hand in end of arm piece and stitch across and down sides catching hand to end and sides together; attach arms to suit by making a dart on wrong side of each side of suit. Seam face to hat from A to A. Embroider a red nose by working satin stitch over and over to form a bump. Fill in mouth, eyes and eyebrows with black ink. Fold with right sides together matching notches in hat and seam back seam; turn to right side and stuff. Work a running stitch around bottom and gather slightly, fasten thread back and forth so that cotton will stay in place. Fold top of suit down and stitch; fold legs up; and stitch. Fold feet on mark and stitch on dashed lines. Gather bottoms of legs of suit up tightly at stitching, and fasten tab of foot to gathers. Tack ruffle to foot and heel. Gather top of suit at stitching to fit bottom of head, fill suit about half full of beans and tack head in place to gathers at neck. Make two pompons of wool and tack to hat and front of suit.